



L.A. Care
HEALTH PLAN®

For All of L.A.

HEDIS Trends in Medi-Cal (HEDIS MY 2021-MY 2023)				
Acronym	HEDIS Measures	HEDIS 2022 (MY 2021)	HEDIS 2023 (MY 2022)	HEDIS 2024 (MY 2023)
AAB	Avoidance of Antibiotic Treatment in Adults with Acute Bronchitis	46.43%	49.60%	50.01%
AAP	Adults' Access to Preventive/Ambulatory Health Services	63.41%	60.21%	62.61%
ADD	Follow-Up for Children Prescribed ADHD Medication-initiation	53.67%	55.55%	55.10%
ADD	Follow-Up for Children Prescribed ADHD Medication -Continuation and Maintenance	61.81%	60.63%	53.35%
AMM	Antidepressant Medication Management - Acute Phase	63.97%	65.76%	85.63%
AMM	Antidepressant Medication Management- continuation phase	45.16%	46.99%	75.75%
AMR	Asthma Medication Ratio	66.76%	69.84%	62.99%
APM-E	Metabolic Monitoring for Children and Adolescents on Antipsychotics (Blood Glucose and Cholesterol Testing - Total)	51.71%	45.16%	46.55%

N/A – Not applicable



L.A. Care
HEALTH PLAN®

For All of L.A.

HEDIS Trends in Medi-Cal (HEDIS MY 2021-MY 2023)				
Acronym	HEDIS Measures	HEDIS 2022 (MY 2021)	HEDIS 2023 (MY 2022)	HEDIS 2024 (MY 2023)
BCS-E	Breast Cancer Screening - Total	54.51%	54.94%	59.61%
BPD	Blood Pressure Control (<140/90) for Patients With Diabetes	58.15%	64.23%	70.90%
CBP	Controlling High Blood Pressure - Total	61.48%	62.76%	66.75%
CCS	Cervical Cancer Screening	60.97%	54.43%	55.99%
CHL	Chlamydia Screening in Women-Total	68.12%	67.71%	69.91%
CIS-10	Childhood Immunization Status - Combo 10	33.58%	35.52%	29.68%
COU	Risk of Continued Opioid Use— 31 day rate (lower rate is better)	2.75%	2.90%	2.59%

N/A – Not applicable



L.A. Care
HEALTH PLAN®

For All of L.A.

HEDIS Trends in Medi-Cal (HEDIS MY 2021-MY 2023)				
Acronym	HEDIS Measures	HEDIS 2022 (MY 2021)	HEDIS 2023 (MY 2022)	HEDIS 2024 (MY 2023)
CWP	Appropriate Testing for Children with Pharyngitis	22.91%	26.33%	32.25%
DEV	Developmental Screening in the First Three Years of Life	23.60%	28.28%	39.68%
EED	Diabetes: Eye Exam for Patients With Diabetes	50.37%	57.18%	60.39%
FUA	Follow-up After Emergency Department Visit for Alcohol and other Drug Abuse or Dependence (7-day Rates)	4.17%	15.92%	17.76%
FUA	Follow-up After Emergency Department Visit for Alcohol and other Drug Abuse or Dependence (30-day Rates)	6.17%	26.15%	28.40%
FUH	Follow-Up After Hospitalization for Mental Illness (in 7 days)	19.25%	17.31%	17.69%
FUM	Follow-up After Emergency Department Visit for Mental Illness (7-day Rates)	24.61%	24.36%	23.63%

N/A – Not applicable



L.A. Care
HEALTH PLAN®

For All of L.A.

HEDIS Trends in Medi-Cal (HEDIS MY 2021-MY 2023)

Acronym	HEDIS Measures	HEDIS 2022 (MY 2021)	HEDIS 2023 (MY 2022)	HEDIS 2024 (MY 2023)
FUM	Follow-up After Emergency Department Visit for Mental Illness (30-day Rates)	36.47%	35.70%	35.45%
HBD	Diabetes: Hemoglobin A1c Control for Patients With Diabetes — HbA1c Control <8%	50.37%	54.50%	54.52%
HBD	Diabetes: Hemoglobin A1c Control for Patients With Diabetes — HbA1c Poor Control >9%	39.42%	36.98%	36.43%
HDO	Use of Opioids at High Dosage (lower rate is better)	3.28%	2.07%	1.59%
IET	Initiation and Engagement of Alcohol and Other Drug Dependence Treatment - Engagement Total	6.13%	6.03%	6.91%
IMA-2	Immunizations for Adolescents – Combo 2	40.88%	39.17%	44.28%
KED	Kidney Health Evaluation for Patients With Diabetes -	N/A	49.87%	43.24%

N/A – Not applicable



L.A. Care
HEALTH PLAN®

For All of L.A.

HEDIS Trends in Medi-Cal (HEDIS MY 2021-MY 2023)				
Acronym	HEDIS Measures	HEDIS 2022 (MY 2021)	HEDIS 2023 (MY 2022)	HEDIS 2024 (MY 2023)
LBP	Use of Imaging Studies for Low Back Pain	77.64%	76.26%	74.09%
LSC	Lead Screening in Children	48.91%	54.50%	63.26%
PCE	Pharmacotherapy Management of COPD Exacerbation Systemic Corticosteroid	72.81%	75.21%	61.38%
PCE	Pharmacotherapy Management of COPD Exacerbation Bronchodilator	88.30%	89.05%	74.63%
PPC-PST	Prenatal and Postpartum Care - Postpartum Care	80.00%	80.74%	82.59%
PPC-Pre	Prenatal and Postpartum Care - Timeliness of Prenatal Care	90.16%	91.11%	91.11%
SAA	Adherence to Antipsychotic Medications for Individuals with Schizophrenia	63.83%	70.47%	72.44%

N/A – Not applicable



L.A. Care
HEALTH PLAN®

For All of L.A.

HEDIS Trends in Medi-Cal (HEDIS MY 2021-MY 2023)				
Acronym	HEDIS Measures	HEDIS 2022 (MY 2021)	HEDIS 2023 (MY 2022)	HEDIS 2024 (MY 2023)
SMD	Diabetes Monitoring for People with Diabetes and Schizophrenia	70.61%	69.27%	71.93%
SPC	Statin Therapy for Patients with Cardiovascular Disease - Therapy	79.64%	79.22%	71.52%
SPC	Statin Therapy for Patients with Cardiovascular Disease – Adherence	70.85%	76.44%	91.15%
SPD	Statin Therapy for Patients with Diabetes - Therapy	70.99%	70.35%	64.22%
SPD	Statin Therapy for Patients with Diabetes – Adherence	66.11%	72.49%	91.20%
SSD	Diabetes Screening for People with Schizophrenia or Bipolar Disorder who are Using Antipsychotic Medications	78.90%	80.83%	82.06%
UOP	Use of Opioids from Multiple Providers - Multiple Prescribers and Multiple Pharmacies Rates (lower rate is better)	2.84%	2.08%	2.81%

N/A – Not applicable

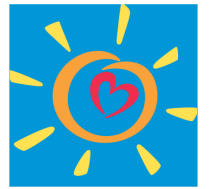


L.A. Care
HEALTH PLAN®

For All of L.A.

HEDIS Trends in Medi-Cal (HEDIS MY 2021-MY 2023)				
Acronym	HEDIS Measures	HEDIS 2022 (MY 2021)	HEDIS 2023 (MY 2022)	HEDIS 2024 (MY 2023)
URI	Appropriate Treatment for Children with Upper Respiratory Infections	86.86%	88.78%	88.00%
W-30	Well-Child Visits in the First 30 months of Life - Well-Child Visits in the First 15 Months	33.36%	45.63%	46.72%
W-30	Well-Child Visits in the First 30 months of Life - Well-Child Visits for Age 15 Months - 30 Months	59.47%	62.64%	64.28%
WCC-BMI	Weight Assessment & Counseling for Nutrition& Physical for Children and Adolescents (BMI)	90.16%	88.21%	90.97%
WCC--N	Weight Assessment & Counseling for Nutrition& Physical for Children and Adolescents (Nutrition)	85.90%	80.79%	82.29%

N/A – Not applicable



L.A. Care
HEALTH PLAN®

For All of L.A.

HEDIS Trends in Medi-Cal (HEDIS MY 2021-MY 2023)				
Acronym	HEDIS Measures	HEDIS 2022 (MY 2021)	HEDIS 2023 (MY 2022)	HEDIS 2024 (MY 2023)
WCC-PA	Weight Assessment & Counseling for Nutrition & Physical for Children and Adolescents (Physical Activity)	84.26%	78.17%	82.99%
WCV	Child and Adolescent Well-Care Visits - Total	N/A	46.64%	48.67%

N/A – Not applicable