

Frequency of Ongoing Prenatal Care (FPC)



Q: Which members are included in the sample?

A: Women who delivered between *November 6, 2015 and November 5, 2016* and had the following number of expected prenatal visits during the first, second, and third trimesters.

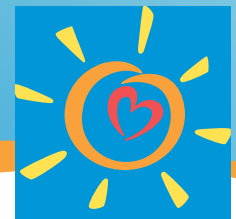
- < 21 percent of expected visits
- 21 percent – 40 percent of expected visits
- 41 percent – 60 percent expected visits
- 61 percent – 80 percent of expected visits
- ≥ 81 percent of expected visits

Expected Number of Prenatal Care Visits for a Given Gestational Age and Month Member Enrolled in the Organization

Month of Pregnancy Member Enrolled in the Organization*									
Gestational Age in Weeks	0-1 st month	2 nd month	3 rd month	4 th month	5 th month	6 th month	7 th month	8 th month	9 th month
28	6	5	4	3	1	1	—	—	—
29	6	5	4	3	1	1	—	—	—
30	7	6	5	4	2	1	1	—	—
31	7	6	5	4	2	1	1	—	—
32	8	7	6	5	3	2	1	—	—
33	8	7	6	5	3	2	1	—	—
34	9	8	7	6	4	3	2	1	—
35	9	8	7	6	4	3	2	1	—
36	10	9	8	7	5	4	3	1	—
37	11	10	9	8	6	5	4	2	—
38	12	11	10	9	7	6	5	3	—
39	13	12	11	10	8	7	6	4	1
40	14	13	12	11	9	8	7	5	1
41	15	14	13	12	10	9	8	6	2
42	16	15	14	13	11	10	9	7	3
43	17	16	15	14	12	11	10	8	4

Note: Dashes indicate that no visits are expected.

Frequency of Ongoing Prenatal Care (FPC)



L.A. Care
HEALTH PLAN®

Q: What codes are used?

A: Please reference attached sample codes and Value Set Directory for additional codes

Q: What documentation is needed in the medical record?

A:

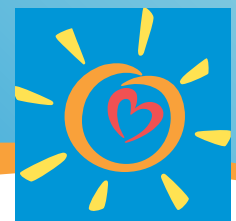
- ACOG form
- Progress notes with basic physical OB exam that includes auscultation for fetal heart tone or pelvic exam with OB observations or measurement of fundus height
- Lab report – OB panel (includes all labs within the panel), TORCH antibody panel, a rubella antibody test/titer with an Rh incompatibility (ABO/Rh) blood typing, linked with **an** office visit
- Echography of a pregnant uterus / Pelvic ultrasound, linked with an office visit
- Documentation of EDD in conjunction with either prenatal risk assessment and counseling /education or complete OB history

Q: How to improve score for this HEDIS measure?

A:

- Use of complete and accurate Value Set Codes.
- Timely submission of claims and encounter data
- Ensure proper documentation in medical record
- Deliveries **NOT** resulting in a Live Birth – *proper coding or documentation will assist in excluding members from the HEDIS sample*

Frequency of Ongoing Prenatal Care (FPC)



L.A. Care
HEALTH PLAN®

SAMPLE CODES

The codes listed below are not inclusive and do not represent a complete list of codes found in the NCQA HEDIS® Value Set. To ensure accurate documentation, please refer to the HEDIS® 2017 Value Set Directory located on the L.A. Care Website at:

<http://www.lacare.org/providers/provider-resources/hedis-resources>

ICD-10 Pregnancy codes

Refer to Pregnancy Diagnosis Value Set

CPT Delivery codes

59400, 59409, 59410, 59510, 59514, 59515, 59610, 59612, 59614, 59618, 59620, 59622

PRENATAL CARE CODES

CPT Laboratory codes

Obstetric Panel	80055
ABO	86900
Cytomegalovirus Antibody	86644
Herpes Simplex Antibody	86694, 86695, 86696
Rh	86901
Rubella Antibody	86762
Toxoplasma Antibody	86777, 86778

CPT Prenatal Ultrasound codes

76801, 76805, 76811, 76813, 76815-76821, 76825-76828

Frequency of Ongoing Prenatal Care (FPC)



L.A. Care
HEALTH PLAN®

CPT Stand Alone Prenatal Visit code

99500

CPT Prenatal Visit codes

99201-99205, 99211-99215, 99241-99245

CPT II Stand Alone Prenatal Visit codes

0500F, 0501F, 0502F

CPT Prenatal Bundled Service codes

59400, 59425, 59426, 59510, 59610, 59618

HCPCS codes

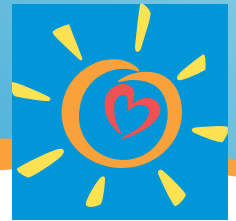
Prenatal Visits	G0463, T1015
Stand Alone Prenatal Visits	H1000-H1004

Exclusion codes

Refer to Non-live Births Value Set



Prenatal and Postpartum Care (PPC)



L.A. Care
HEALTH PLAN®

Q: Which members are included in the sample?

A:

- Women who delivered (EDD) between November 6, 2015 and November 5, 2016, *and*
- Had a prenatal care visit in the 1st trimester, on date of enrollment, or within 42 days of enrollment in the health plan, *and*
- Had a postpartum visit on or between 21 and 56 days after delivery

Q: What codes are used?

A: Please reference attached sample codes and Value Set Directory for additional codes

Q: What documentation is acceptable?

Prenatal Care Visit

(First Trimester, on date of enrollment, or within 42 days of enrollment)

- ACOG
- Progress notes with basic physical OB exam that includes auscultation for fetal heart tone or pelvic exam with OB observations or measurement of fundus height
- Lab report – OB panel (must include all labs within the panel), TORCH antibody panel with an office visit
- Echography of a pregnant uterus/Pelvic ultrasound with an office visit
- Documentation of LMP or EDD in conjunction with either: prenatal risk assessment and counseling /education or complete OB history.

Post-partum Visit

(21-56 days after delivery)

Progress note with documentation of:

- Pelvic exam
- Evaluation of weight, BP, breasts and abdomen
- Any documentation of: Post-Partum Care, PP care, PP check, 6-week check, or a preprinted “postpartum
- Pap smear within post-partum timeframe

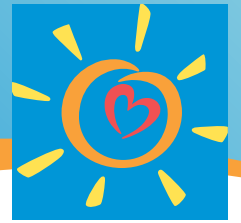
Q: How to improve score for this HEDIS measure?

A:

- Use of complete and accurate Value Set Codes
- Timely submission of claims and encounter data
- Ensure proper documentation in medical record
- May use EDD to identify the first trimester for Timeliness of Prenatal Care and use the date of delivery for the Postpartum rate
- Documentation of deliveries **NOT** resulting in a Live Birth – *proper coding or documentation will assist in excluding members from the HEDIS sample*



Prenatal and Postpartum Care (PPC)



L.A. Care
HEALTH PLAN®

SAMPLE CODES

The codes listed below are not inclusive and do not represent a complete list of codes found in the NCQA HEDIS® Value Set. To ensure accurate documentation, please refer to the HEDIS® 2017 Value Set Directory located on the L.A. Care Website at: <http://www.lacare.org/providers/provider-resources/hedis-resources>

ICD-10 Pregnancy codes

Refer to Pregnancy Diagnosis Value Set

CPT Delivery codes

59400, 59409, 59410, 59510, 59514, 59515, 59610, 59612, 59614, 59618, 59620, 59622

PRENATAL CARE

CPT Laboratory codes

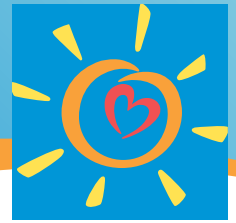
Obstetric Panel	80055
ABO	86900
Cytomegalovirus Antibody	86644
Herpes Simplex Antibody	86694, 86695, 86696
Rh	86901
Rubella Antibody	86762
Toxoplasma Antibody	86777, 86778

CPT Prenatal Ultrasound codes

76801, 76805, 76811, 76813, 76815-76821, 76825-76828



Prenatal and Postpartum Care (PPC)



L.A. Care
HEALTH PLAN®

CPT Stand Alone Prenatal Visit code

99500

CPT Prenatal Visit codes

99201-99205, 99211-99215, 99241-99245

CPT II Stand Alone Prenatal Visit codes

0500E, 0501E, 0502F

CPT Prenatal Bundled Service codes

59400, 59425, 59426, 59510, 59610, 59618

HCPCS Prenatal codes

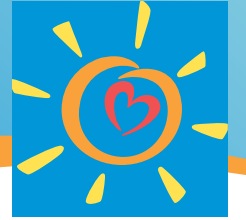
Prenatal Visits	G0463, T1015
Stand Alone Prenatal Visits	H1000-H1004

POSTPARTUM CARE

ICD-10 Postpartum Visit codes

Z01.411, Z01.419, Z01.42, Z30.430, Z39.1, Z39.2

Prenatal and Postpartum Care (PPC)



L.A. Care
HEALTH PLAN®

CPT Postpartum Visit codes

57170, 58300, 59430, 99501

CPT II Postpartum Visit codes

0503F

CPT Postpartum Bundled Service codes

59400, 59410, 59510, 59515, 59610, 59614, 59618, 59622

HCPCS Postpartum codes

Postpartum Visits	G0101
Cervical Cytology	G0123, G0124, G0141, G0143, G0144, G0145, G0147, G0148, P3000, P3001, Q0091

Exclusion ICD-10CM codes

Refer to Non-live Births Value Set