

L.A. Care
HEALTH PLAN®

HEDIS Tips: Commercial Obstetrical (OB) Services

HEDIS® (Healthcare Effectiveness Data and Information Set) is a standardized set of performance measurements developed by the National Committee for Quality Assurance (NCQA) for measuring quality health care performance.

As a part of L. A. Care’s initiative to improve quality of care to our members, this HEDIS® reference guide is designed to help achieve the best quality care, in alignment with the HEDIS® standards as well as with evidence-based clinical practice guidelines. This reference material may also provide guidance on accurate and complete documentation as well as timely data submission to L. A. Care.

CPT II codes are supplemental tracking codes that describe clinical components included in evaluation and management or clinical services, and are not associated with any relative value. Incorporating HEDIS performance measure CPT II codes will provide L.A. Care Health Plan the necessary information for monitoring quality performance measures for timely prenatal and postpartum care.

Benefits of utilizing NCQA approved CPT II codes:

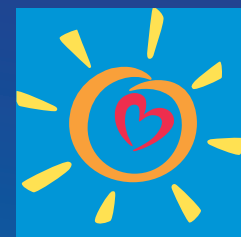
- ▶ Facilitates data collection for purposes of HEDIS performance measurement.
- ▶ Decreases the need to submit medical records during HEDIS data collection.
- ▶ Gaps in care are more quickly identified as completed and can increase performance in any incentives in which you participate.
- ▶ Provides access to more accurate medical data that can be used to support your efforts through targeted care management services.
- ▶ Helps identify opportunities for improvement, interventions can be implemented to improve performance during the service year.

CODES		CPT II
Unbundled	Less than 4 prenatal visits Use appropriate E/M code per visit 59430 Postpartum care only	0500F 0501F Stand Alone Prenatal Visits 0502F 0503F Postpartum care visit
Bundled	59425 Antepartum care; 4-6 visits 59426 Antepartum care; 7 or more visits 59400 Antepartum care, vaginal delivery, and postpartum care 59510 Antepartum care, Cesarean-section delivery, and postpartum care	

To access or download a copy of this reference guide and other reference materials, please visit: <http://www.lacare.org/providers/provider-resources/hedis-resources>.



The HEDIS Operations Team is here to support quality patient care and ensure the care you provide members is reflected in your HEDIS performance. Send any email inquiries our way, along with the best time/day and phone number to reach you. We will reach out to you within 3 business days. HEDISOps@lacare.org. Please note: ALL emails containing PHI must be securely encrypted.



L.A. Care
HEALTH PLAN®

HEDIS Tips: Medi-Cal Obstetrical (OB) Services

HEDIS® (Healthcare Effectiveness Data and Information Set) is a standardized set of performance measurements developed by the National Committee for Quality Assurance (NCQA) for measuring quality health care performance.

As a part of L. A. Care’s initiative to improve quality of care to our members, this HEDIS® reference guide is designed to help achieve the best quality care, in alignment with the HEDIS® standards as well as with evidence-based clinical practice guidelines. This reference material may also provide guidance on accurate and complete documentation as well as timely data submission to L.A. Care.

CPT II codes are supplemental tracking codes that describe clinical components included in evaluation and management or clinical services, and are not associated with any relative value. Incorporating HEDIS performance measure CPT II codes will provide L.A. Care Health Plan the necessary information for monitoring quality performance measures for timely prenatal and postpartum care.

Benefits of utilizing NCQA approved CPT II codes:

- ▶ Facilitates data collection for purposes of HEDIS performance measurement.
- ▶ Decreases the need to submit medical records during HEDIS data collection.
- ▶ Gaps in care are more quickly identified as completed and can increase performance in any incentives in which you participate.
- ▶ Provides access to more accurate medical data that can be used to support your efforts through targeted care management services.
- ▶ Helps identify opportunities for improvement, interventions can be implemented to improve performance during the service year.

CODES		CPT II
HCPCS Unbundled	Z1032 Initial comprehensive pregnancy-related office visit (1 in 6 months) Z1034 Antepartum office visit (13 in 9 months) Z1038 Postpartum office visit (1 in 6 months)	0500F Initial comprehensive pregnancy-related office visit (1 in 6 months) 0502F 0503F Postpartum care visit
CPT Bundled	59400 Antepartum care, vaginal delivery, and postpartum care 59510 Antepartum care, Cesarean-section delivery, and postpartum care	

To access or download a copy of this reference guide and other reference materials, please visit: <http://www.lacare.org/providers/provider-resources/hedis-resources>.



The HEDIS Operations Team is here to support quality patient care and ensure the care you provide members is reflected in your HEDIS performance. Send any email inquiries our way, along with the best time/day and phone number to reach you. We will reach out to you within 3 business days. HEDISOps@lacare.org. Please note: ALL emails containing PHI must be securely encrypted.