



November 22, 2023

RE: ICF/DD Carve In-TAR Request to Potential Providers

Dear Potential ICF/DD Home Providers,

Effective January 1, 2024, all Medi-Cal Managed Care Plans (MCPs) will be responsible for the full Long Term Care (LTC) benefit at Intermediate Care Facilities for people with developmental disabilities (ICF/DD). Please note that ICF/DD-Continuous Nursing Care Homes are not subject to the LTC Carve-In policy. In scope will be the following facility types Homes:

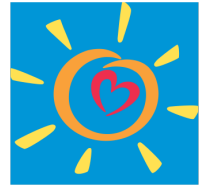
- Intermediate Care Facility for the Developmentally Disabled (ICF/DD);
- Intermediate Care Facility for the Developmentally Disabled – Habilitative (ICF/DD-H);
- Intermediate Care Facility for the Developmentally Disabled – Nursing (ICF/DD-N);

While Department of Health Care Services (DHCS) will be providing MCP with Treatment Authorization Request (TAR) data, we are requesting a **copy of existing TAR** for those members who are enrolled with L.A. Care for seamless transition. In order to ensure no gaps in care occur during the transition, please provide the following information:

- **Copy of existing TAR**

OR

- **ICF-DD information**
 - Facility name
 - Facility phone number, fax number and email address
 - Name of contact
 - Contact phone number, fax number and email address
- **Member**
 - Member name
 - CIN (the first nine characters of the identification number located on the front of the beneficiary's Benefits Identification Card (BIC))
 - Date of birth



L.A. Care
HEALTH PLAN®

For All of L.A.

- Level of Care (ICFDD, ICF/H, or ICF/DD-N)
- Admit Date
- TAR From and To Dates
- Prescribing Physician Name and License Number
- Physician Signature
- Diagnosis Code(s)

Please send the requested information to:

- **Managed Long Term Services and Supports (MLTSS) Email:** MLTSS@lacare.org
- **MLTSS main line:** (855) 427-1223
- **MLTSS fax line:** (213) 438-4866

For contracting questions, please contact Tameia Marshall, Account Manager III at tmarshall@lacare.org. For program/clinical questions, please contact Maricris Tengco, MLTSS Clinical Manager at mtengco@lacare.org.

We appreciate your partnership in ensuring a smooth transition for our members.

Sincerely,

Maricris Tengco, RN; Clinical Manager
Managed Long Term Services and Supports (MLTSS)
L.A. Care Health Plan